

Client: Toll Brothers

Project: Lakewood Ranch 339 East

Title: USGS Quad Map

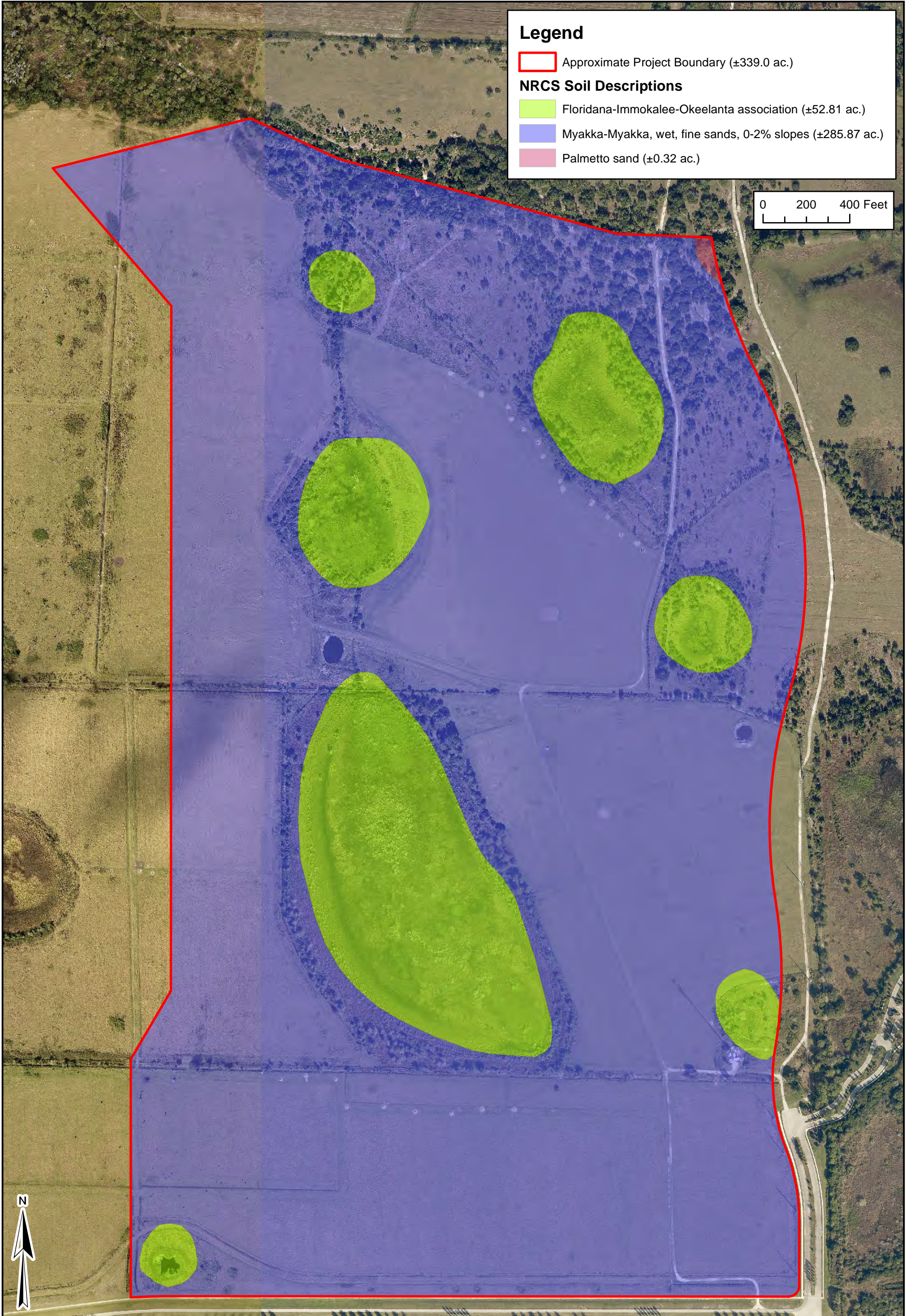


CONSULTANTS INCORPORATED
www.ecoconsultants.net

1523 8th Avenue West, Suite B
Palmetto, FL 34221
T: 941.722.0901
F: 941.722.4931

213 East Park Avenue
Lake Wales, FL 33853
T: 863.676.8996
F: 863.676.7771

Sec: 36 Twp: 35S Rng: 19E
Scale: 1" = 2000'
Date Drawn: 12/27/2016
Drawn by: MJ
Source: ESRI Topo, World Street Maps
Sheet: 16.1





Legend

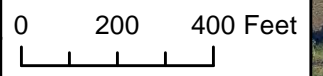
 Approximate Project Boundary (±339.0 ac.)

NRCS Soil Descriptions

 Floridana-Immokalee-Okeelanta association (±52.81 ac.)

 Myakka-Myakka, wet, fine sands, 0-2% slopes (±285.87 ac.)

 Palmetto sand (±0.32 ac.)



Client: Toll Brothers

Project: Lakewood Ranch 339 East

Title: NRCS Soils Map



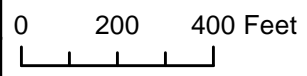
1523 8th Avenue West, Suite B
 Palmetto, FL 34221
 Telephone: 941.722.0901
 Fax: 941.722.4931
 Website: www.ecoconsultants.net

Sec: 36 Twp: 35S Rng: 19E
 Scale: 1" = 400'
 Date Drawn: 12/27/2016
 Drawn by: MJ
 Source: Manatee County
 Sheet: 1 of 1

Legend

- Approximate FLUCCS Habitat Lines
- Approximate Project Boundary

FLUCCS Code	Description	± Acreage
211	Improved Pastures	234.03
213	Woodland Pastures	52.74
510	Streams and Waterways	4.9
534	Reservoirs less than 10 acres	0.45
641	Freshwater Marsh	46.39
821	Transmission Tower	0.15
Total Project Acreage		339.00



Client: Toll Brothers
 Project: Lakewood Ranch 339 East
 Title: FLUCCS Habitat Map



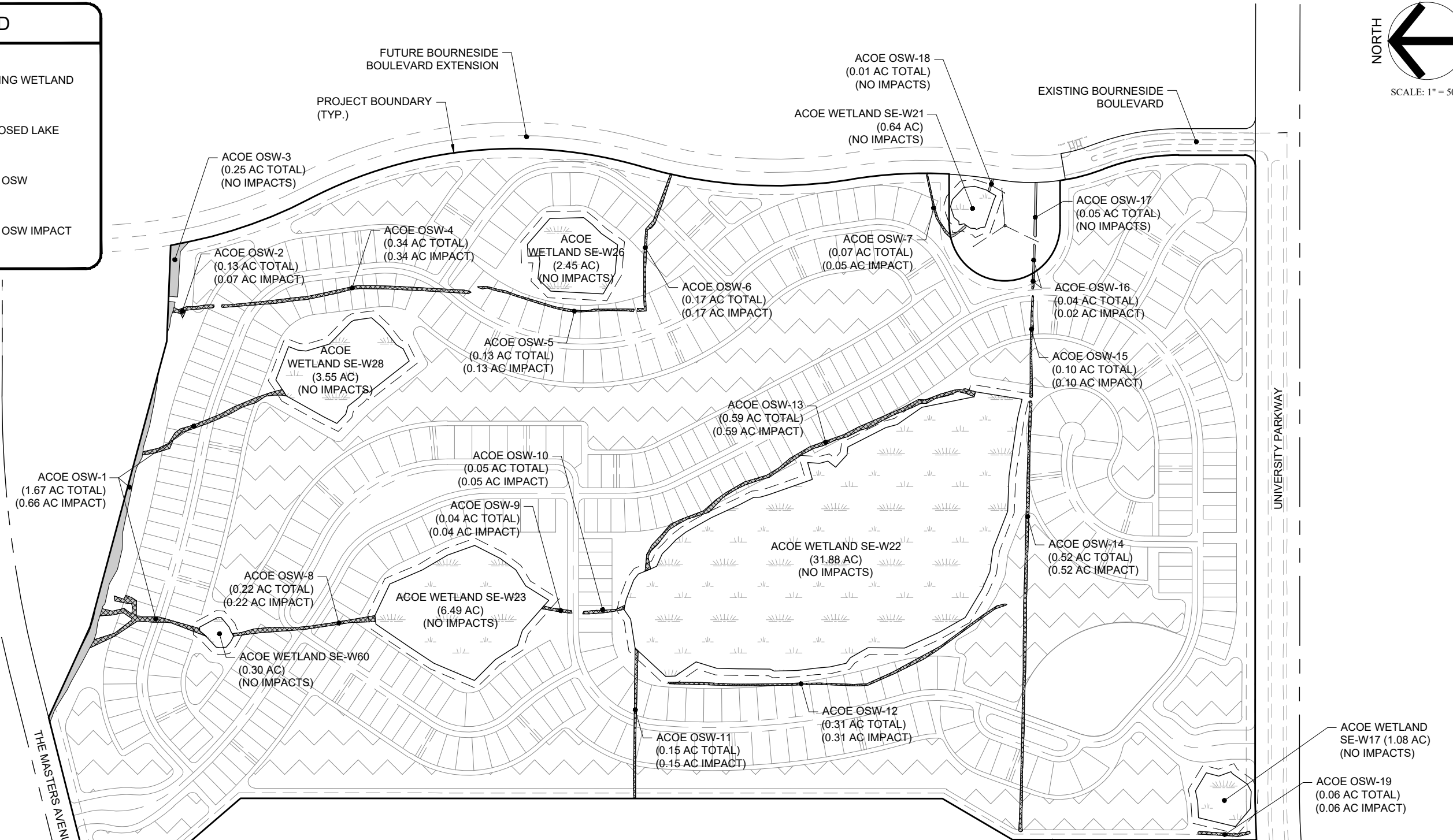
1523 8th Avenue West, Suite B
 Palmetto, FL 34221
 Telephone: 941.722.0901
 Fax: 941.722.4931
 Website: www.ecoconsultants.net

Sec: 36 Twp: 35S Rng: 19E
 Scale: 1" = 400'
 Date Drawn: 12/27/2016
 Drawn by: MJ
 Source: Manatee County
 Sheet: 1 of 1

B:\Projects\615-01 (Lakewood Ranch 339 Acres) Phase One\Drawings-Exhibits\615-01-01 ACOE Impact Exhibits\Current Plans\615010101.dwg

LEGEND

	EXISTING WETLAND
	PROPOSED LAKE
	ACOE OSW
	ACOE OSW IMPACT



ACOE OSW IMPACT TABLE

IMPACT #	AREA (AC)	DREDGE (CY)	FILL (CY)
OSW-1	0.66	0	1,453
OSW-2	0.07	764	295
OSW-4	0.34	0	922
OSW-5	0.13	0	425
OSW-6	0.17	0	270
OSW-7	0.05	0	68
OSW-8	0.22	0	454
OSW-9	0.04	0	89
OSW-10	0.05	0	169

ACOE OSW IMPACT TABLE

IMPACT #	AREA (AC)	DREDGE (CY)	FILL (CY)
OSW-11	0.15	1,171	390
OSW-12	0.31	1,153	391
OSW-13	0.59	0	1,883
OSW-14	0.52	13,596	968
OSW-15	0.10	4,191	148
OSW-16	0.02	0	61
OSW-19	0.06	0	211
TOTAL	3.48	20,875	8,197

VERTICAL ELEVATIONS BASED ON: NAVD-88

LAKWOOD RANCH 339 ACRES

PREPARED FOR:
TOLL BROTHERS
 24201 WALDEN CENTER DRIVE, SUITE 204
 BONITA SPRINGS, FLORIDA 34134
 PHONE: (239) 596-6600

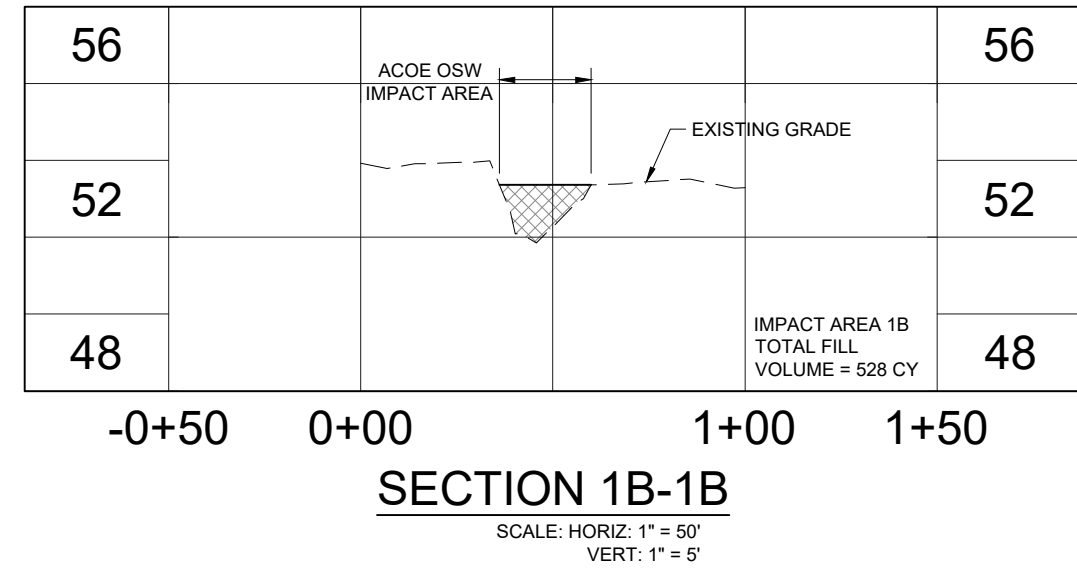
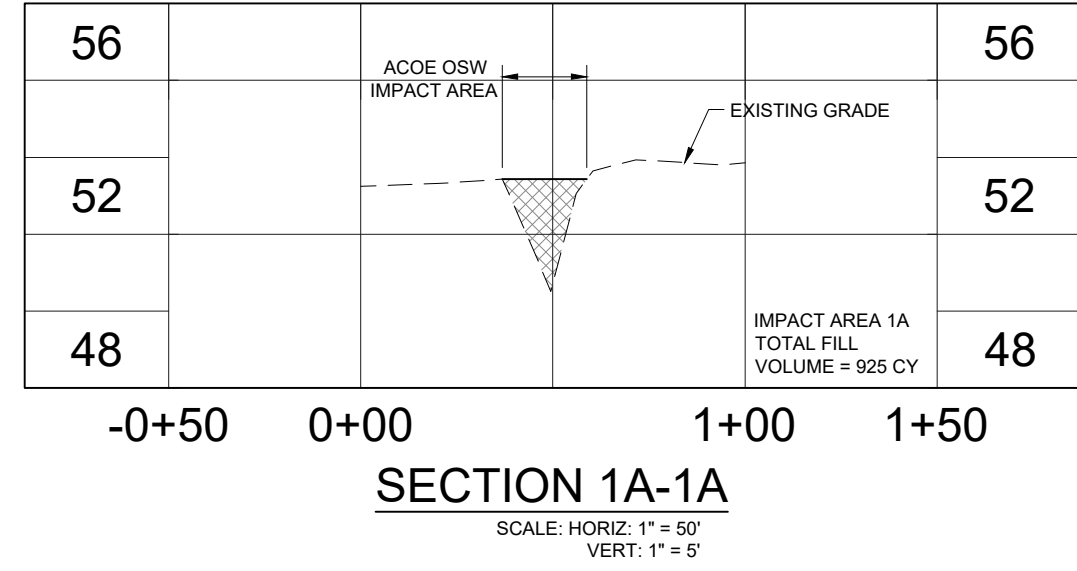
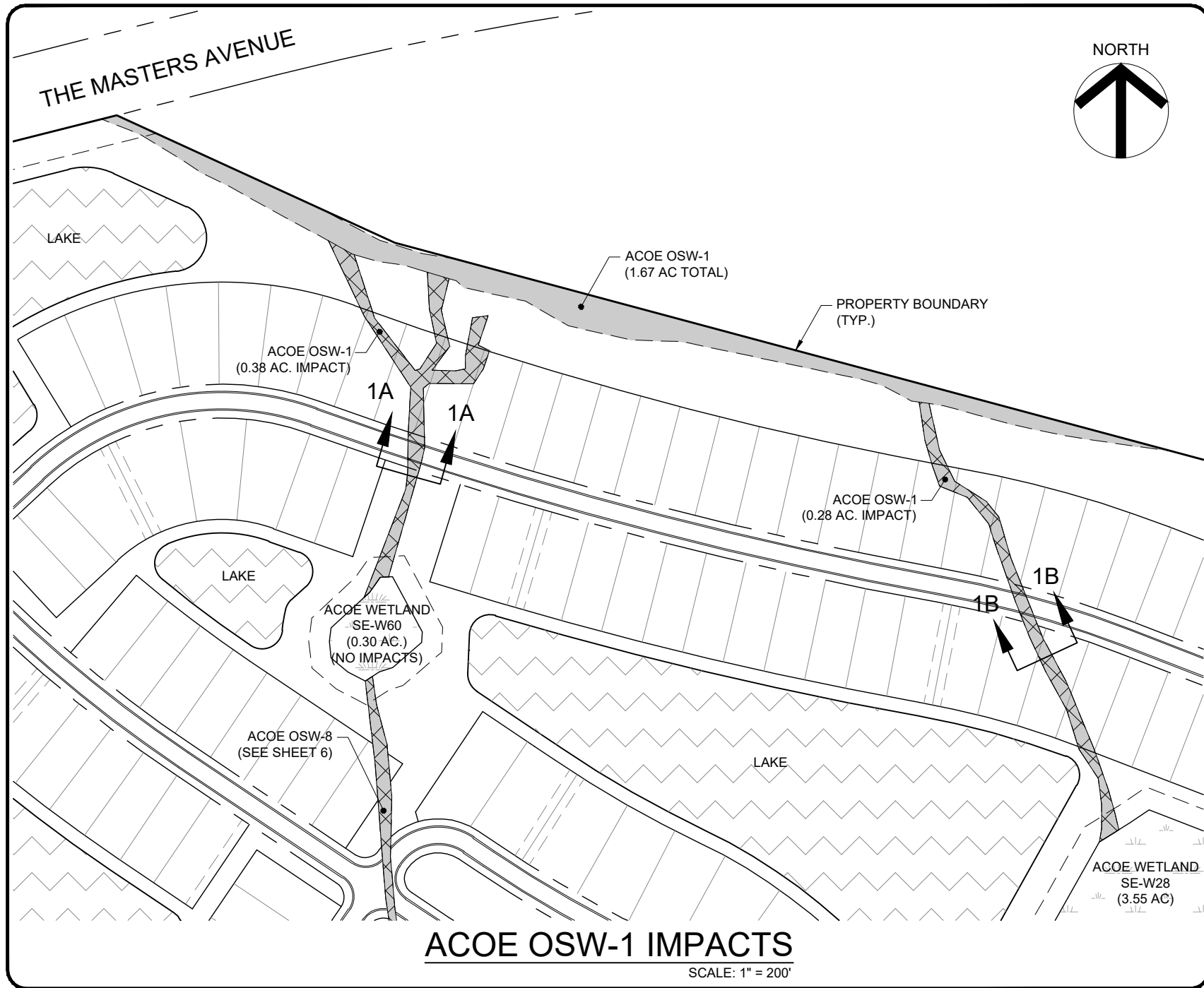
VICINITY MAP

SECTION: TOWNSHIP: RANGE:
 36 35S 19E
 MANATEE COUNTY, FLORIDA
 FILE NAME: 615010101.dwg
 SHEET: 1

FLORIDA CERTIFICATE OF AUTHORIZATION #6636
JEREMY H. ARNOLD, P.E.
 FL LICENSE NO. 66421

WALDROP ENGINEERING
 CIVIL ENGINEERING | PLANNING | LANDSCAPE ARCHITECTURE
 25100 BONITA GRANDE DRIVE - SUITE 305
 BONITA SPRINGS, FL 34135
 P: 239-405-7777 F: 239-405-7899
 EMAIL: info@waldropengineering.com

B:\Projects\615-01 (Lakewood Ranch 339 Acres) Phase One\Drawings-Exhibits\615-01-01 ACOE Impact Exhibits\Current Plans\615010102.dwg



VERTICAL ELEVATIONS BASED ON: NAVD-88

LAKWOOD RANCH 339 ACRES

PREPARED FOR:
TOLL BROTHERS
24201 WALDEN CENTER DRIVE, SUITE 204
BONITA SPRINGS, FLORIDA 34134
PHONE: (239) 596-6600

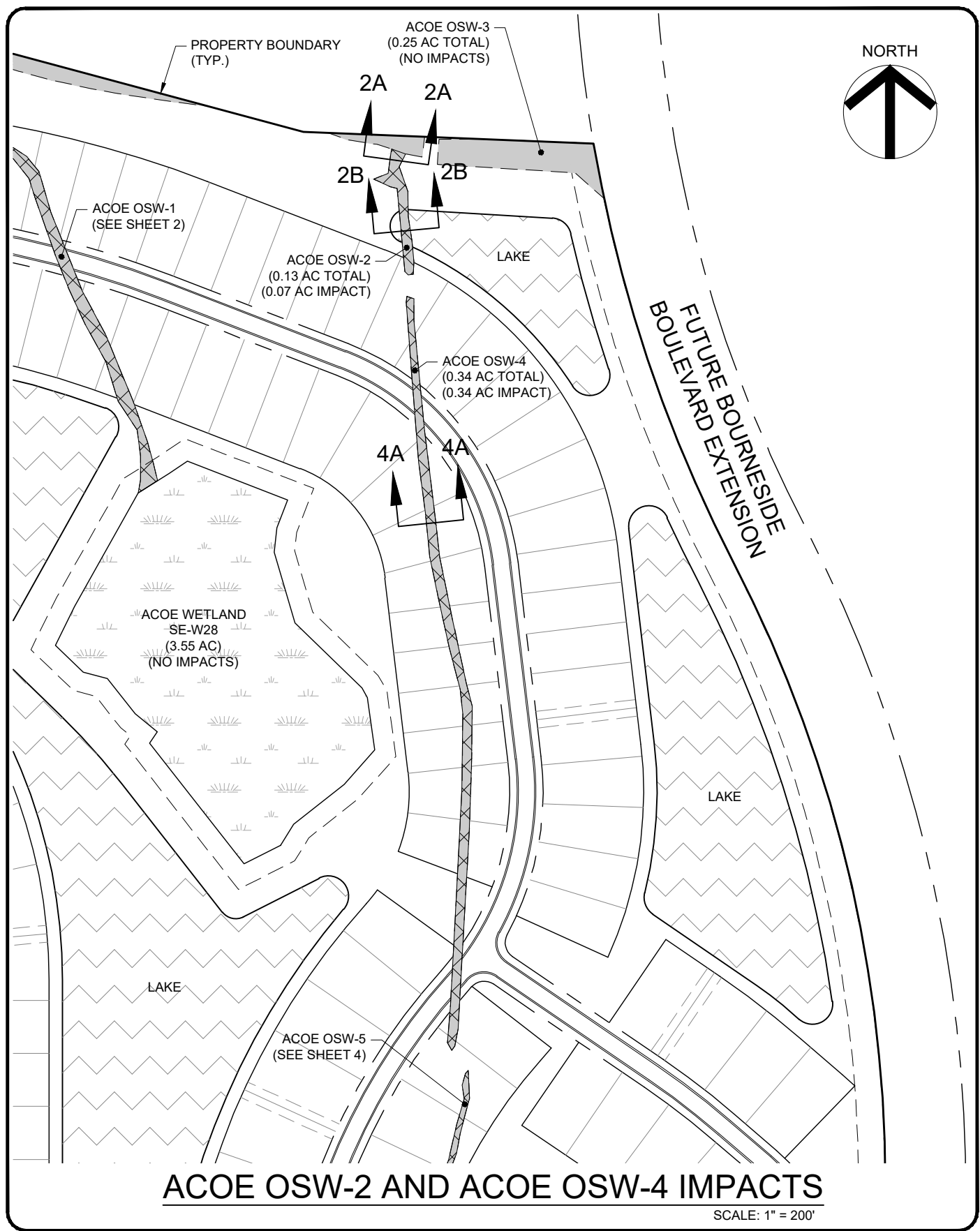
OSW-1 IMPACTS

SECTION: TOWNSHIP: RANGE: 36 35S 19E
MANATEE COUNTY, FLORIDA
FILE NAME: 615010102.dwg
SHEET: 2

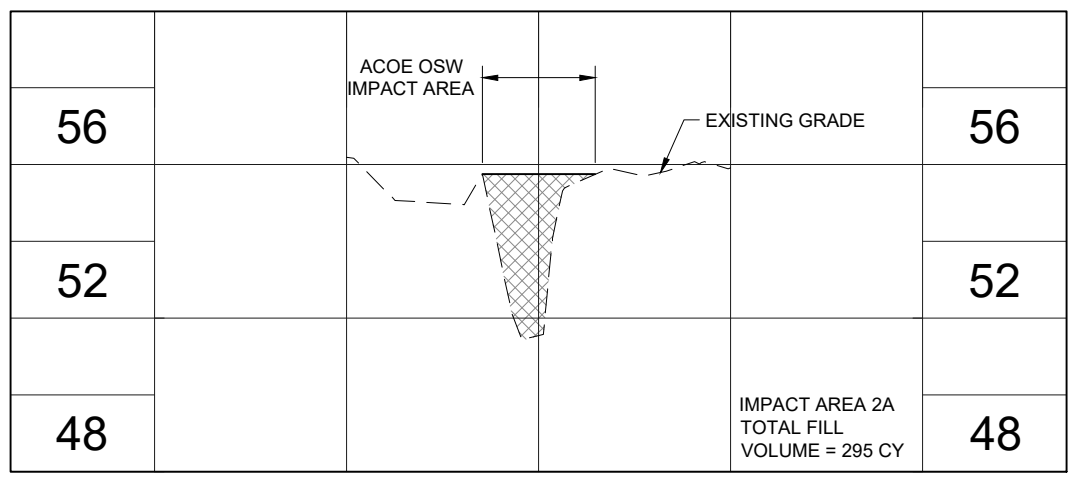
FLORIDA CERTIFICATE OF AUTHORIZATION #6636
JEREMY H. ARNOLD, P.E.
FL LICENSE NO. 66421

WALDROP ENGINEERING
CIVIL ENGINEERING | PLANNING | LANDSCAPE ARCHITECTURE
25100 BONITA GRANDE DRIVE - SUITE 305
BONITA SPRINGS, FL 34135
P: 239-405-7777 F: 239-405-7899
EMAIL: info@waldropengineering.com

B:\Projects\615-01 (Lakewood Ranch 339 Acres) Phase One\Drawings-Exhibits\Current Plans\615010103.dwg

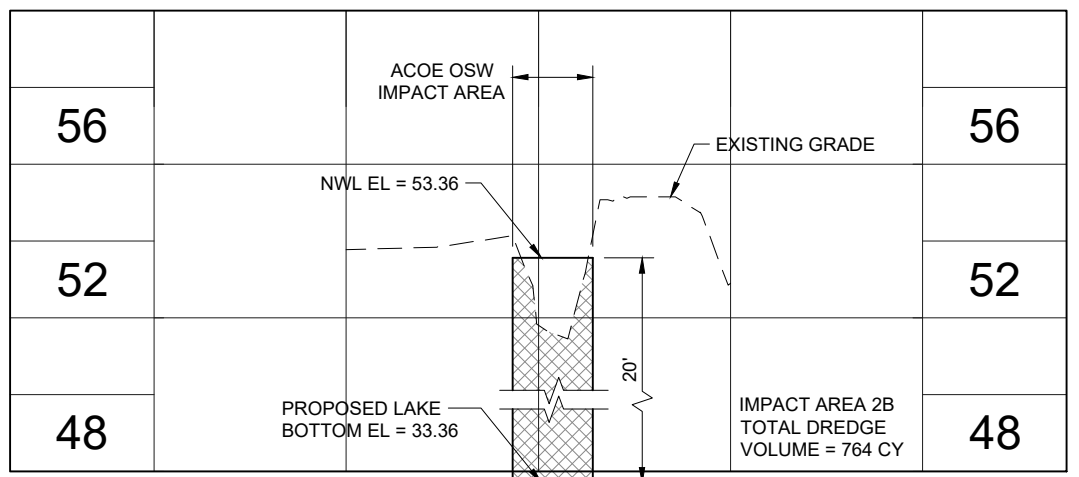


ACOE OSW-2 AND ACOE OSW-4 IMPACTS
SCALE: 1" = 200'



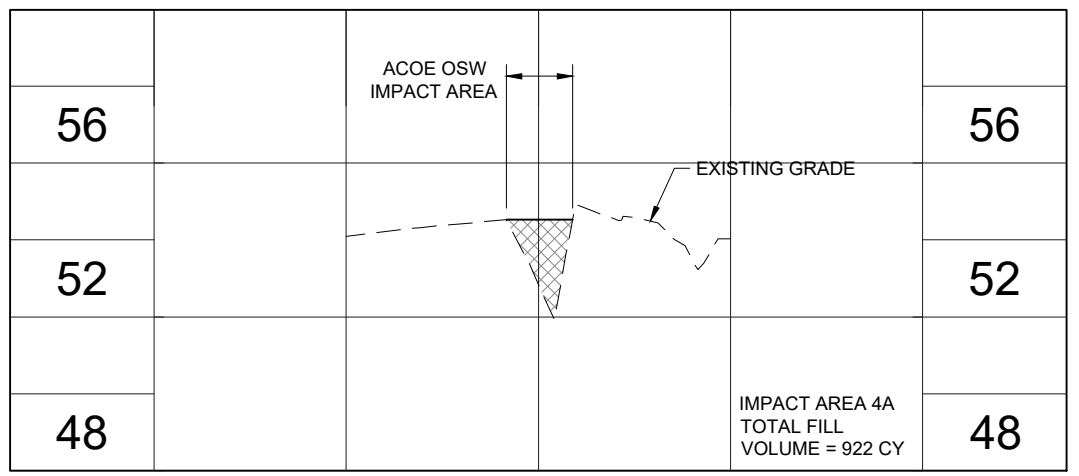
SECTION 2A-2A

SCALE: HORIZ: 1" = 50'
VERT: 1" = 5'



SECTION 2B-2B

SCALE: HORIZ: 1" = 50'
VERT: 1" = 5'



SECTION 4A-4A

SCALE: HORIZ: 1" = 50'
VERT: 1" = 5'

VERTICAL ELEVATIONS BASED ON: NAVD-88

LAKWOOD RANCH 339 ACRES

PREPARED FOR:
TOLL BROTHERS
24201 WALDEN CENTER DRIVE, SUITE 204
BONITA SPRINGS, FLORIDA 34134
PHONE: (239) 596-6600

OSW-2 & OSW-4 IMPACTS

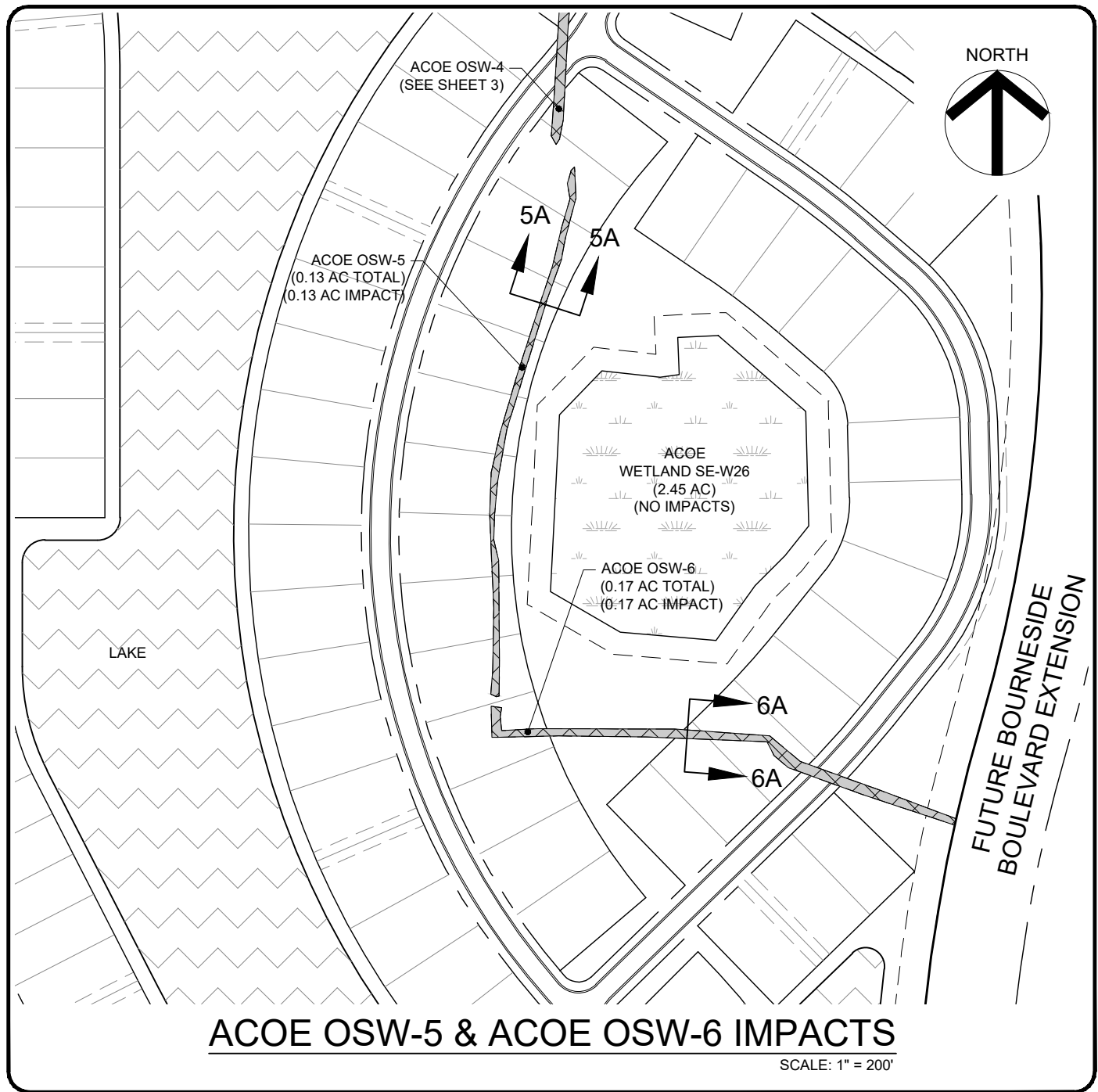
SECTION: TOWNSHIP: RANGE:
36 35S 19E
MANATEE COUNTY, FLORIDA
FILE NAME: 615010103.dwg
SHEET: 3

FLORIDA CERTIFICATE OF AUTHORIZATION #6636

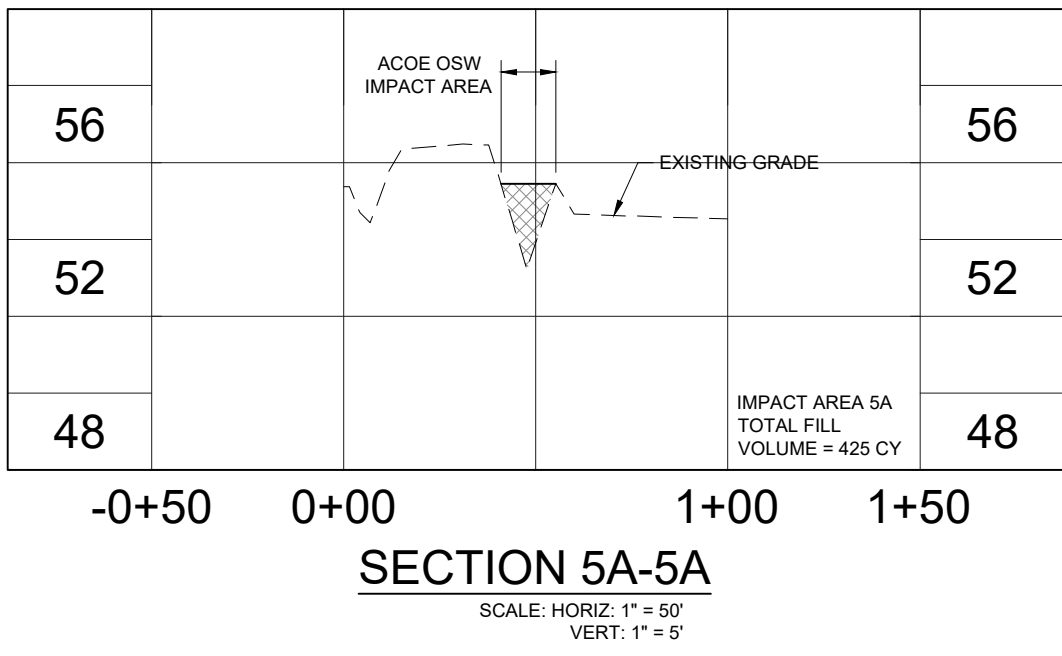
WALDROP ENGINEERING
PLANNING | LANDSCAPE ARCHITECTURE
25100 BONITA GRANDE DRIVE - SUITE 305
BONITA SPRINGS, FL 34135
P: 239-405-7777 F: 239-405-7899
EMAIL: info@waldropengineering.com

JEREMY H. ARNOLD, P.E.
FL LICENSE NO. 66421

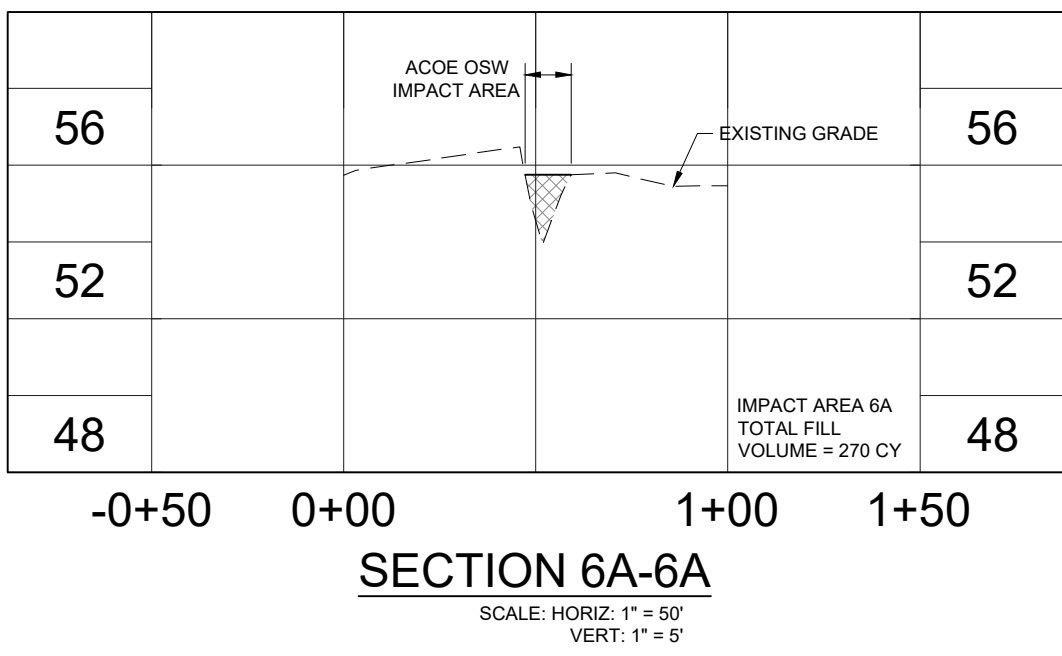
B:\Projects\615-01 (Lakewood Ranch 339 Acres) Phase One\Drawings-Exhibits\615-01-01 ACOE Impact Exhibits\Current Plans\615010104.dwg



ACOE OSW-5 & ACOE OSW-6 IMPACTS
SCALE: 1" = 200'



SECTION 5A-5A



SECTION 6A-6A

VERTICAL ELEVATIONS BASED ON: NAVD-88

LAKWOOD RANCH 339 ACRES

PREPARED FOR:
TOLL BROTHERS
24201 WALDEN CENTER DRIVE, SUITE 204
BONITA SPRINGS, FLORIDA 34134
PHONE: (239) 596-6600

OSW-5 & OSW-6 IMPACTS

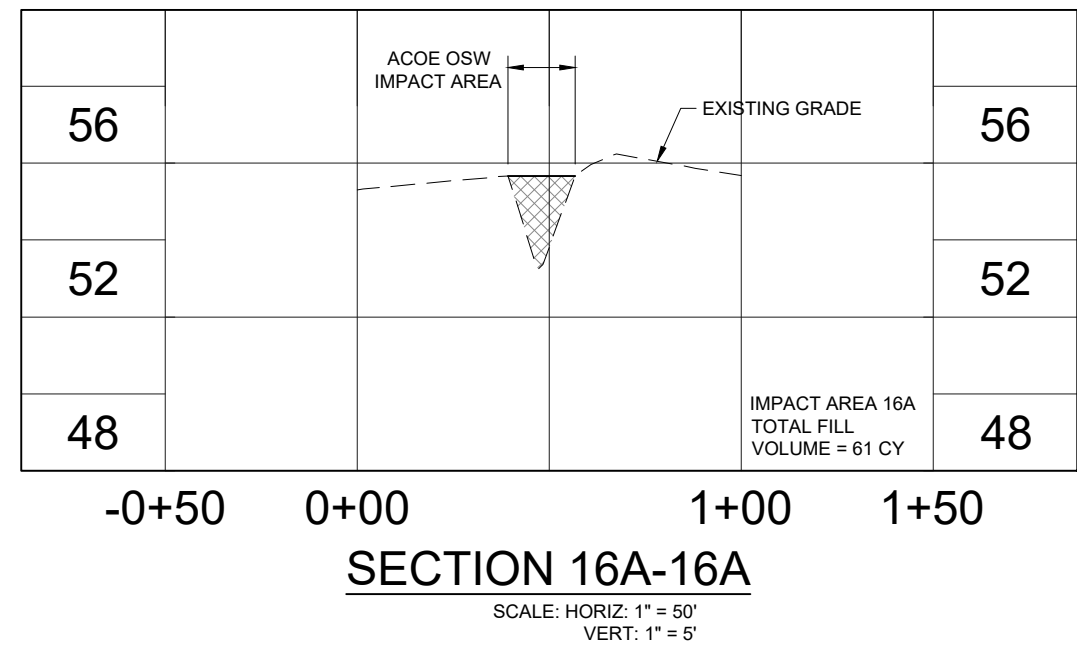
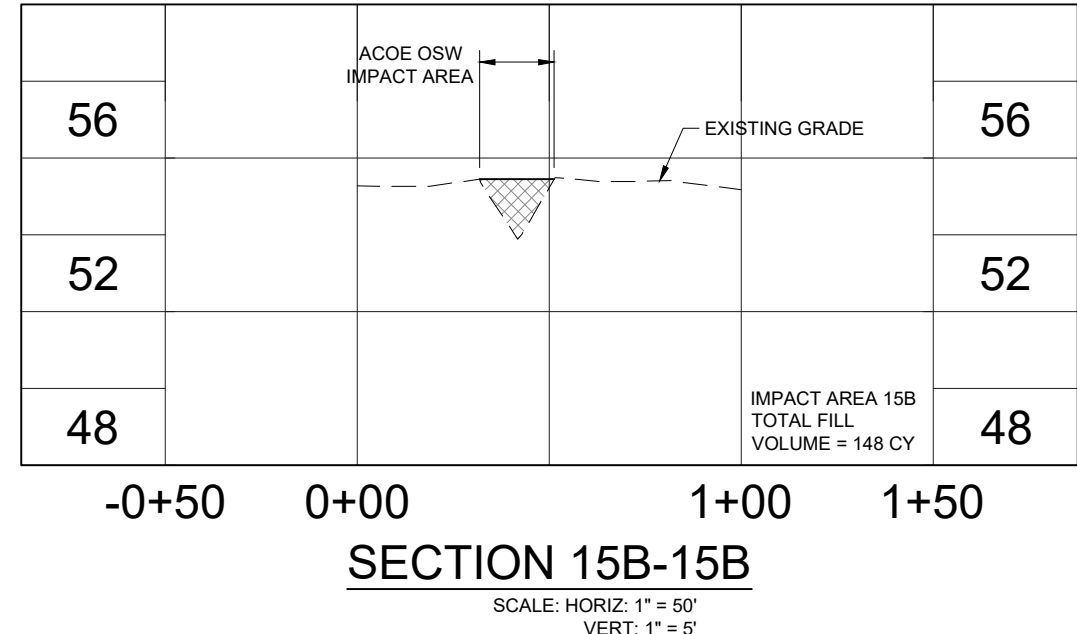
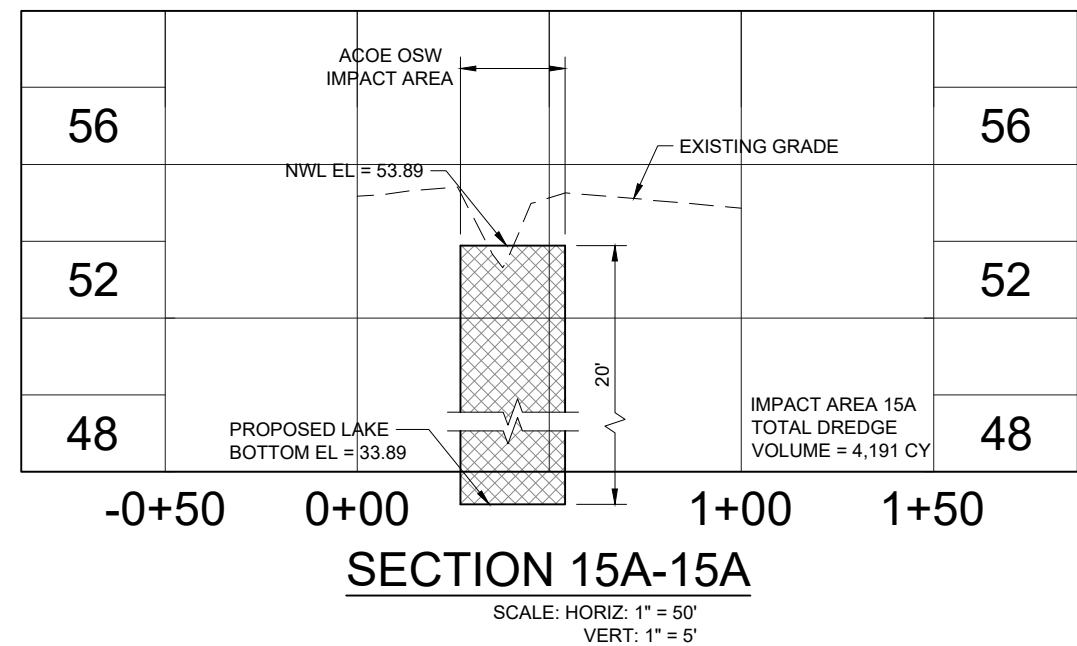
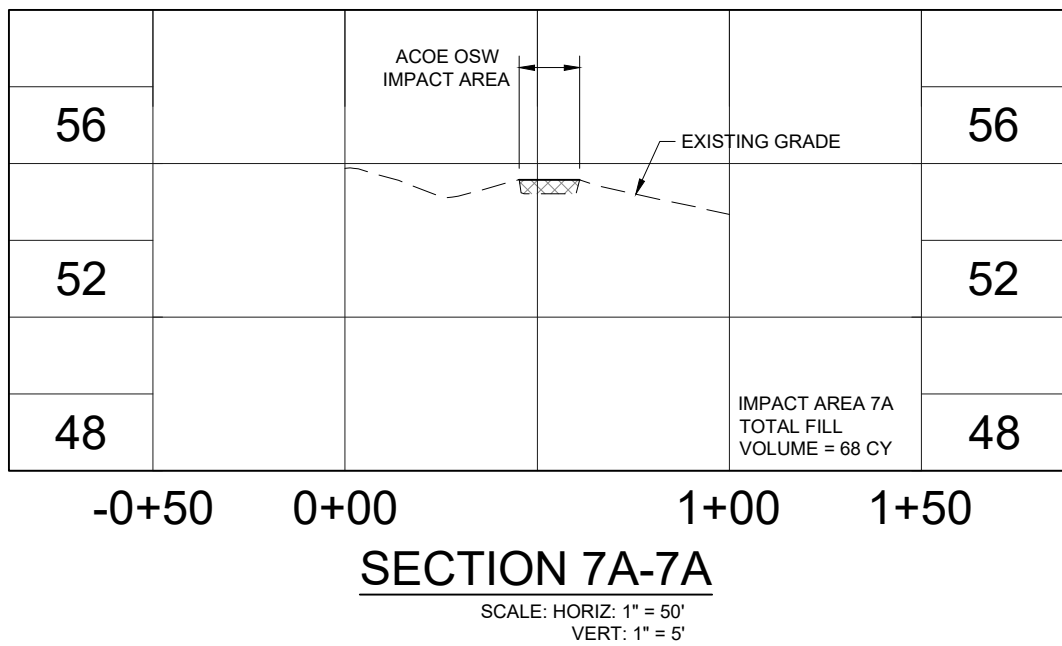
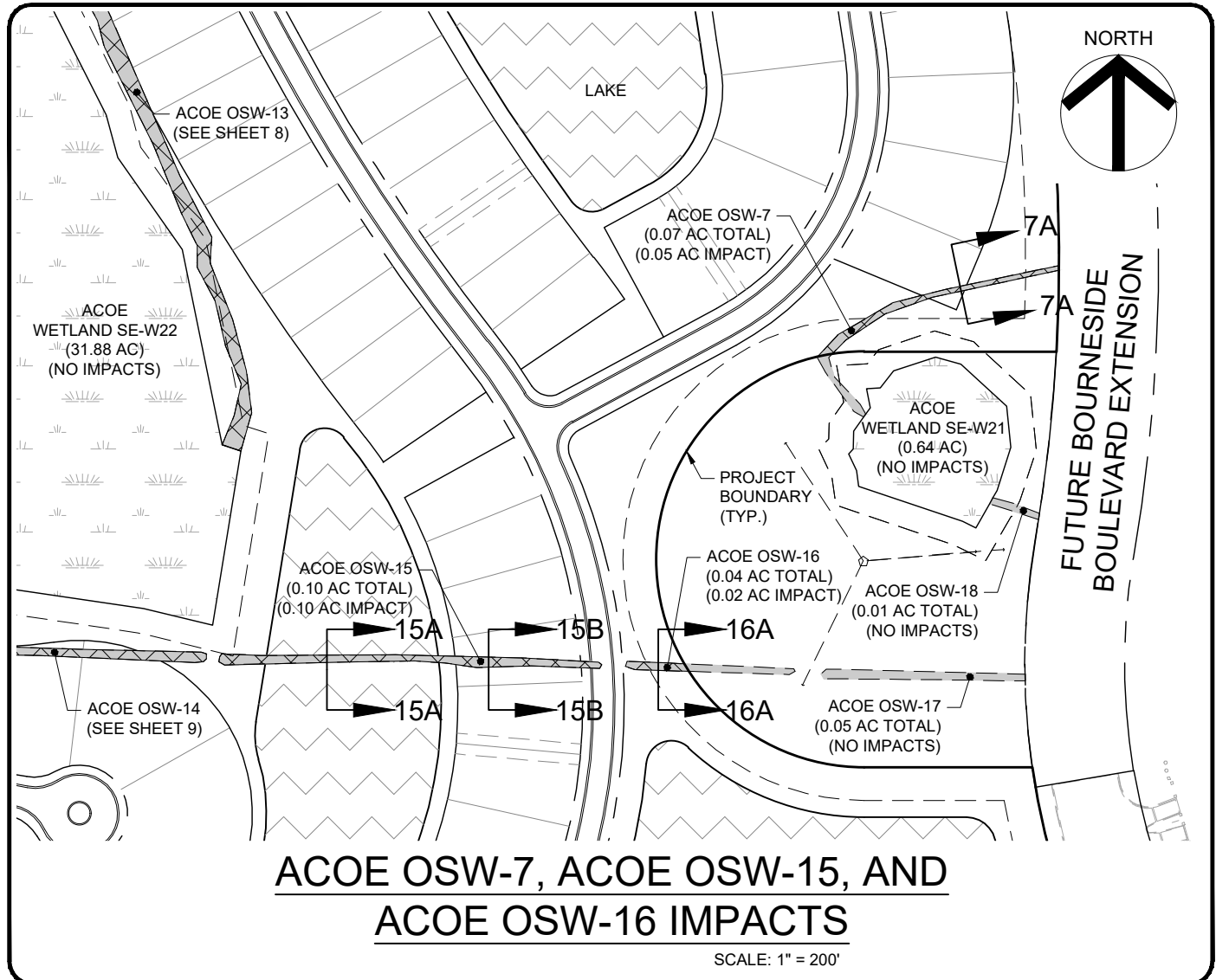
SECTION: TOWNSHIP: RANGE:
36 35S 19E
MANATEE COUNTY, FLORIDA
FILE NAME: 615010104.dwg
SHEET: 4

FLORIDA CERTIFICATE OF AUTHORIZATION #6636

WALDROP ENGINEERING
CIVIL ENGINEERING | PLANNING | LANDSCAPE ARCHITECTURE
25100 BONITA GRANDE DRIVE - SUITE 305
BONITA SPRINGS, FL 34135
P: 239-405-7777 F: 239-405-7899
EMAIL: info@waldropengineering.com

JEREMY H. ARNOLD, P.E.
FL LICENSE NO. 66421

B:\Projects\615-01 (Lakewood Ranch 339 Acres) Phase One\Drawings-Exhibits\Current Plans\615010105.dwg



VERTICAL ELEVATIONS BASED ON: NAVD-88

LAKWOOD RANCH 339 ACRES

OSW-7, OSW-15 AND OSW-16 IMPACTS

WALDROP ENGINEERING
CIVIL ENGINEERING | PLANNING | LANDSCAPE ARCHITECTURE
25100 BONITA GRANDE DRIVE - SUITE 305
BONITA SPRINGS, FL 34135
P: 239-405-7777 F: 239-405-7899
EMAIL: info@waldropengineering.com

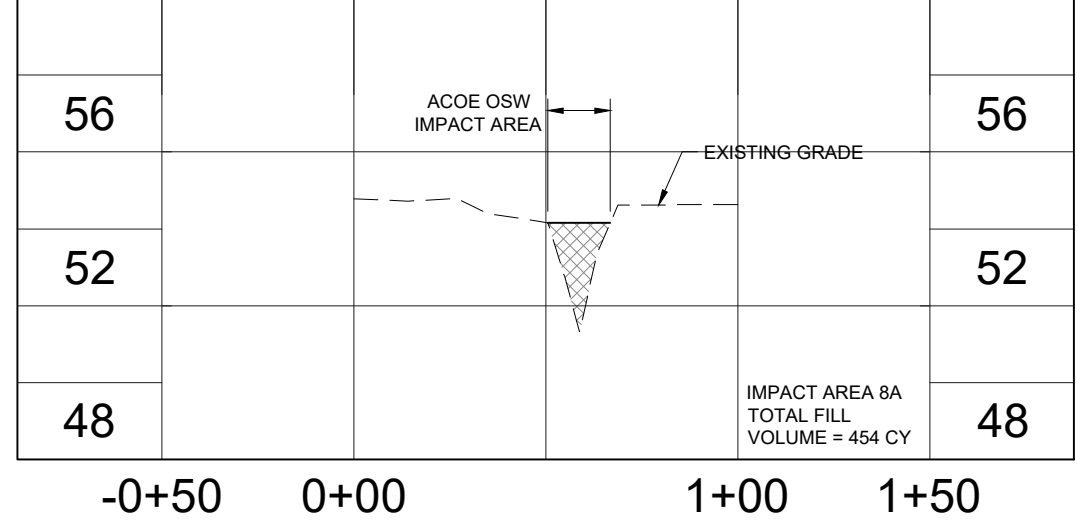
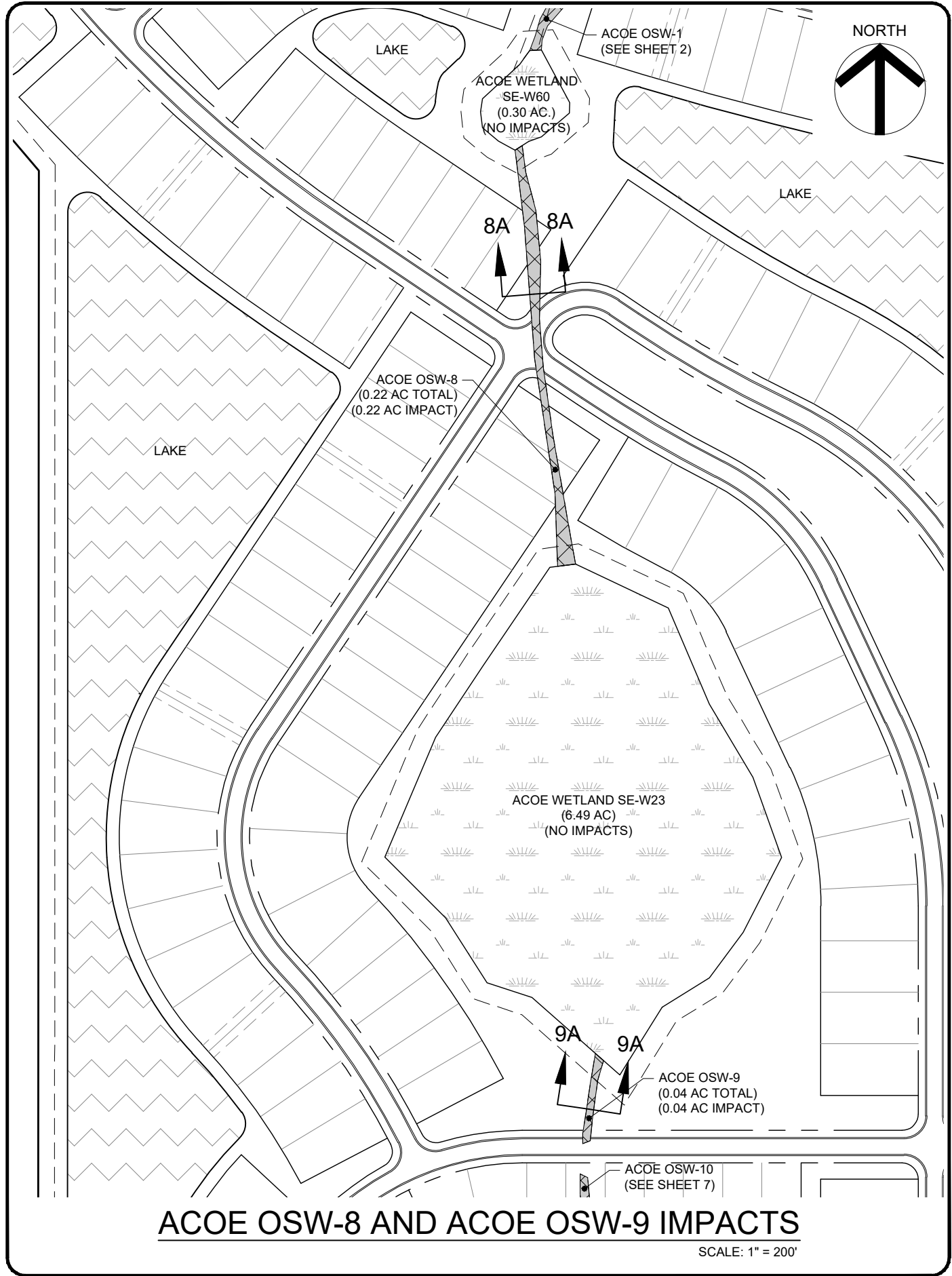
FLORIDA CERTIFICATE OF AUTHORIZATION #6636
JEREMY H. ARNOLD, P.E.
FL LICENSE NO. 66421

PLAN REVISIONS

PREPARED FOR:
TOLL BROTHERS
24201 WALDEN CENTER DRIVE, SUITE 204
BONITA SPRINGS, FLORIDA 34134
PHONE: (239) 596-6600

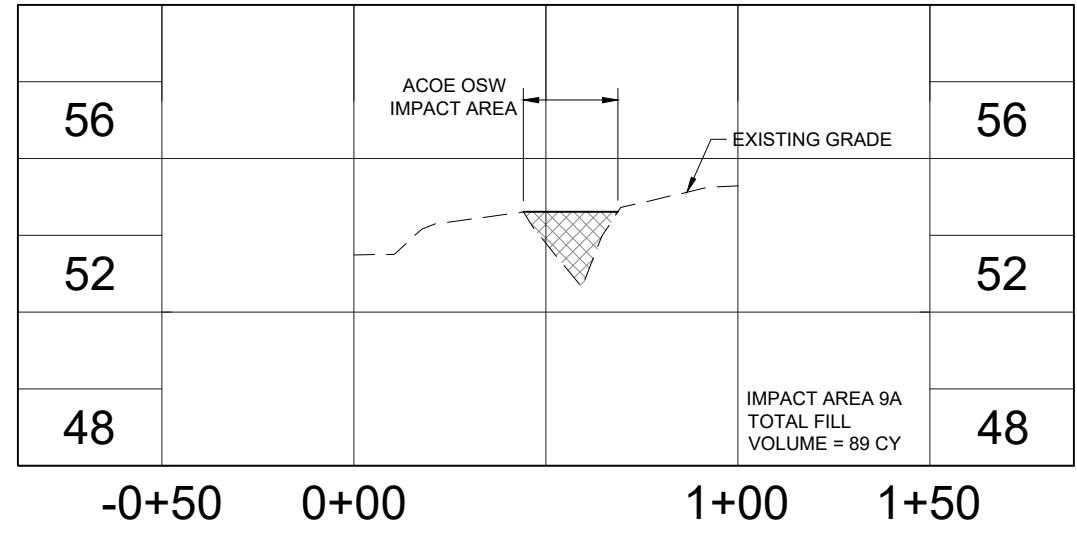
SECTION: TOWNSHIP: RANGE:
36 35S 19E
MANATEE COUNTY, FLORIDA
FILE NAME: 615010105.dwg
SHEET: 5

B:\Projects\615-01 (Lakewood Ranch 339 Acres) Phase One\Drawings-Exhibits\615-01-01 ACOE Impact Exhibits\Current Plans\615010106.dwg



SECTION 8A-8A

SCALE: HORIZ: 1" = 50'
VERT: 1" = 5'



SECTION 9A-9A

SCALE: HORIZ: 1" = 50'
VERT: 1" = 5'

VERTICAL ELEVATIONS BASED ON: NAVD-88

LAKWOOD RANCH 339 ACRES

PREPARED FOR:
TOLL BROTHERS
24201 WALDEN CENTER DRIVE, SUITE 204
BONITA SPRINGS, FLORIDA 34134
PHONE: (239) 596-6600

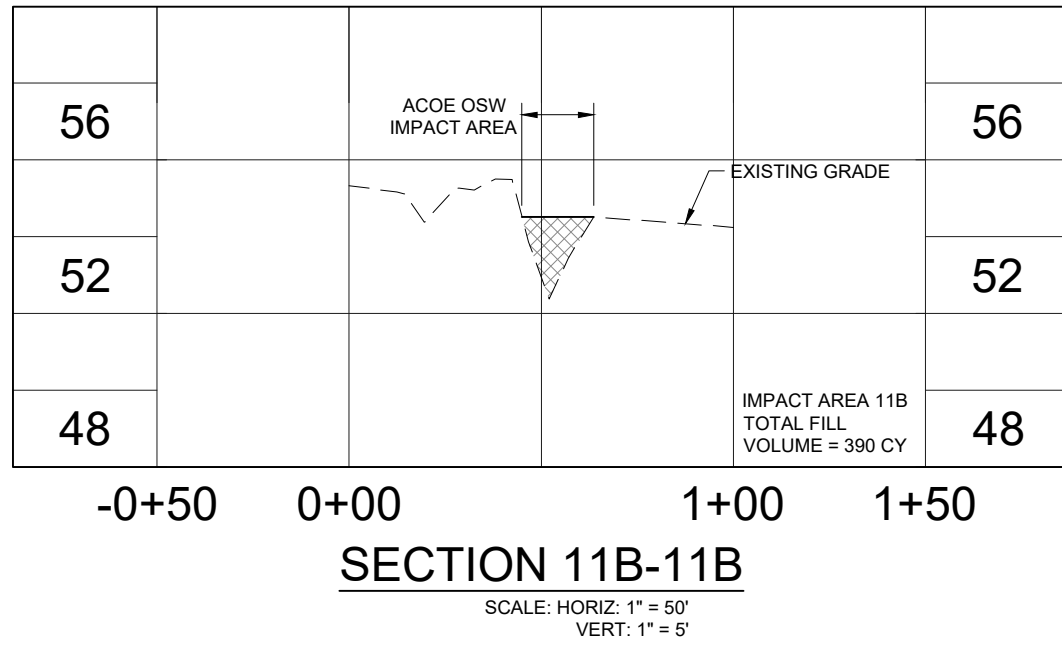
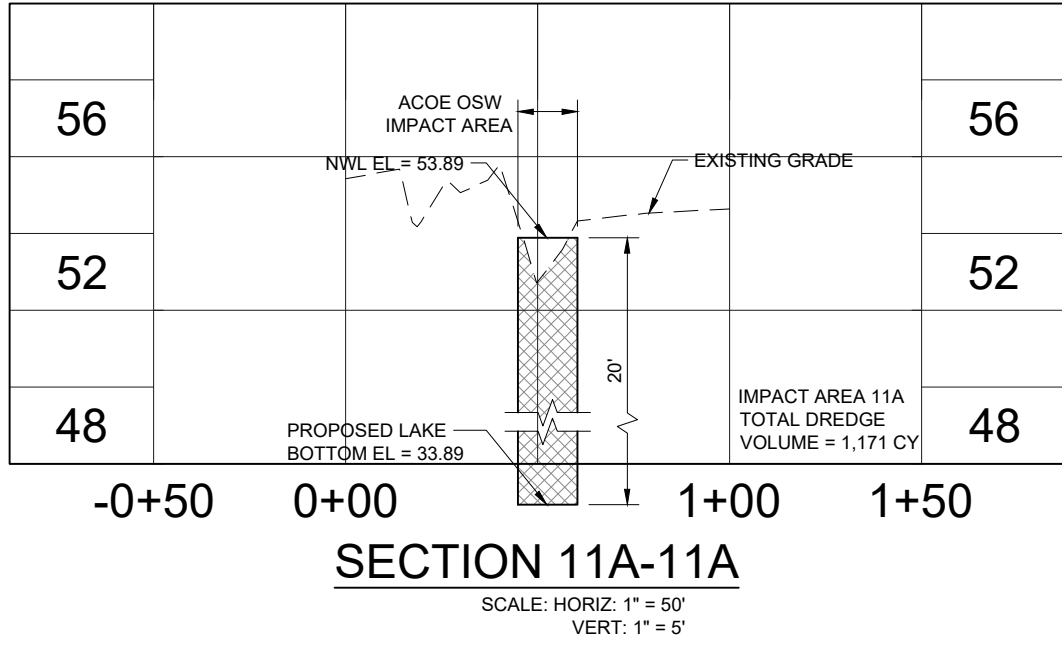
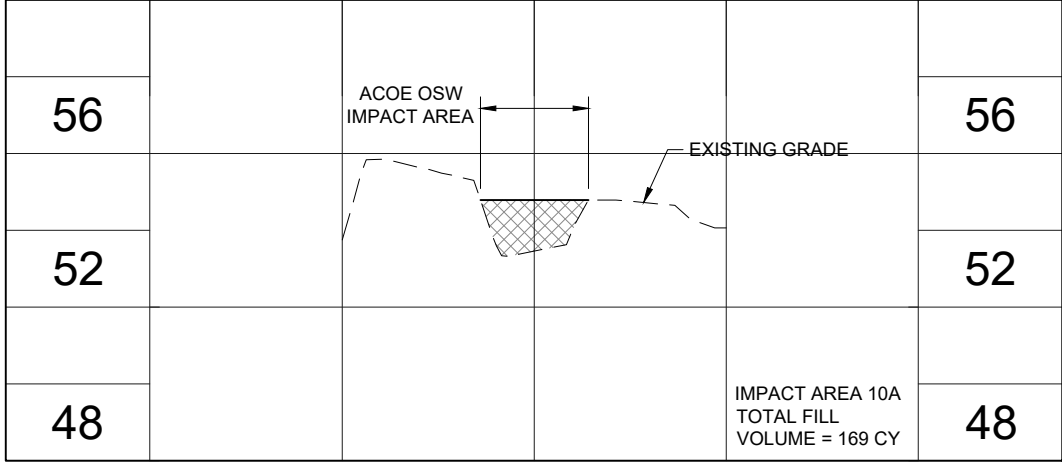
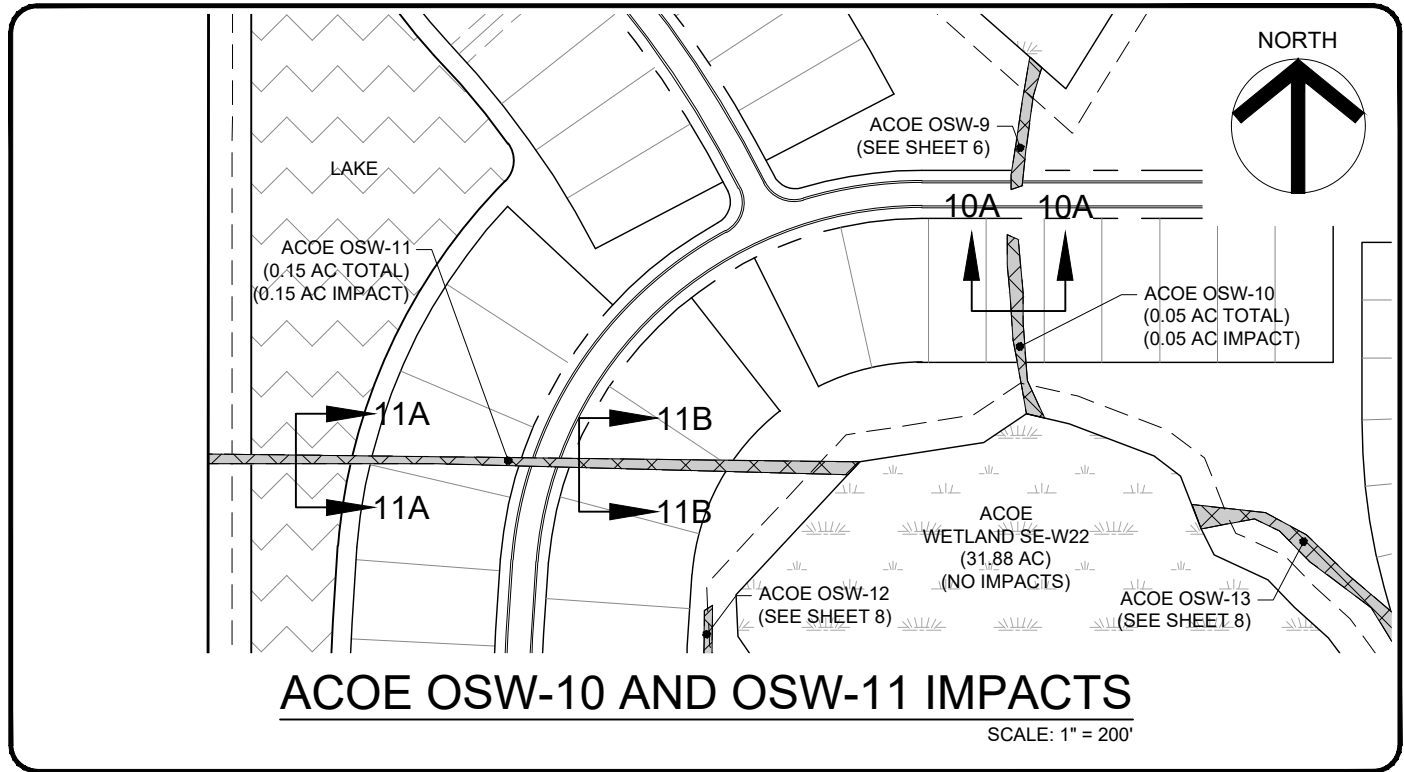
OSW-8 & OSW-9 IMPACTS

SECTION: TOWNSHIP: RANGE:
36 35S 19E
MANATEE COUNTY, FLORIDA
FILE NAME: 615010106.dwg
SHEET: 6

FLORIDA CERTIFICATE OF AUTHORIZATION #6636
JEREMY H. ARNOLD, P.E.
FL LICENSE NO. 66421

WALDROP ENGINEERING
CIVIL ENGINEERING | PLANNING | LANDSCAPE ARCHITECTURE
25100 BONITA GRANDE DRIVE - SUITE 305
BONITA SPRINGS, FL 34135
P: 239-405-7777 F: 239-405-7899
EMAIL: info@waldropengineering.com

B:\Projects\615-01 (Lakewood Ranch 339 Acres) Phase One\Drawings-Exhibits\Current Plans\615010107.dwg



VERTICAL ELEVATIONS BASED ON: NAVD-88

LAKWOOD RANCH 339 ACRES

PREPARED FOR:
TOLL BROTHERS
24201 WALDEN CENTER DRIVE, SUITE 204
BONITA SPRINGS, FLORIDA 34134
PHONE: (239) 596-6600

OSW-10 & OSW-11 IMPACTS

PLAN REVISIONS

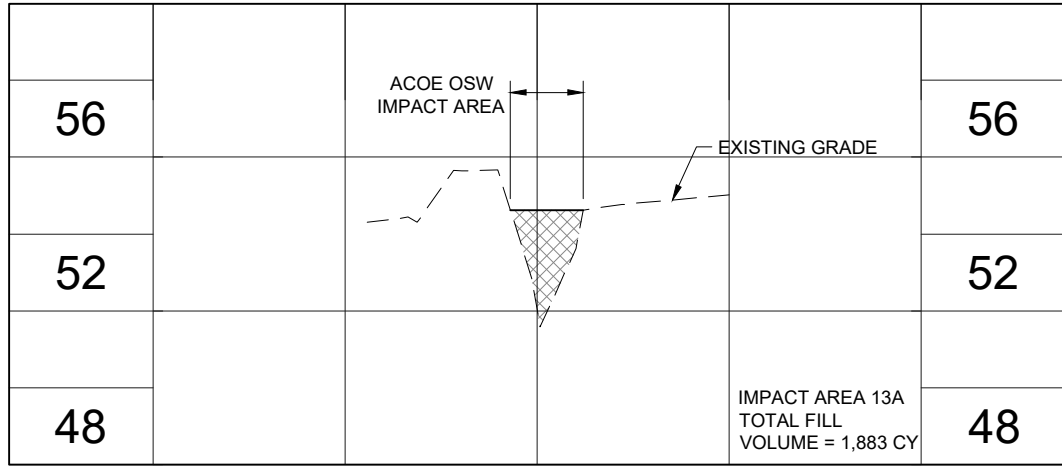
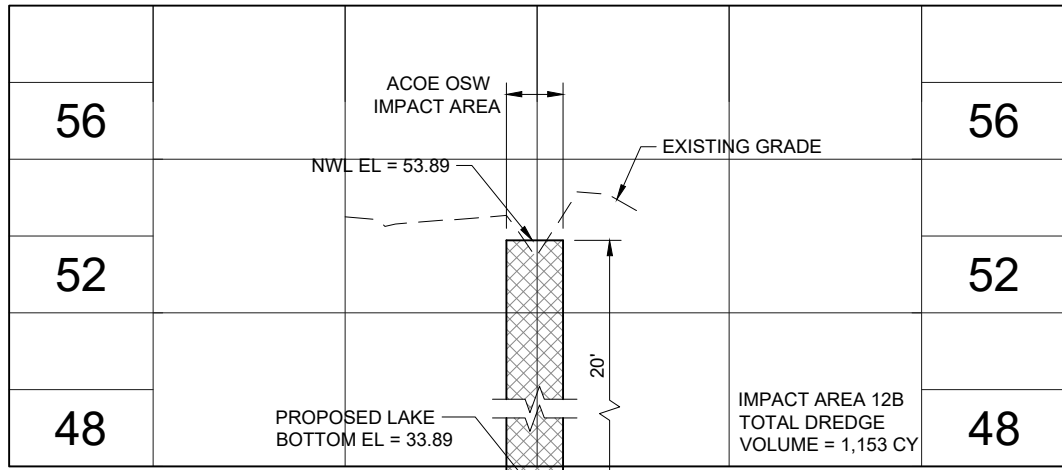
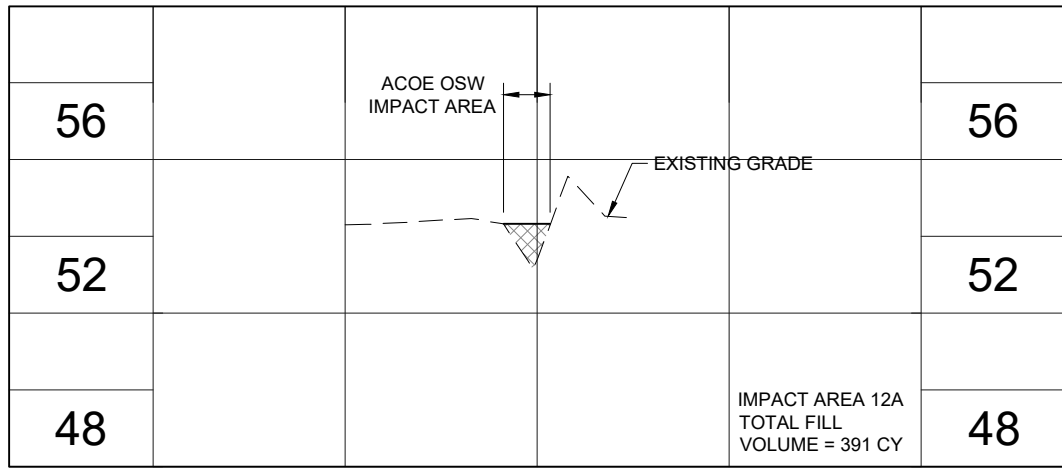
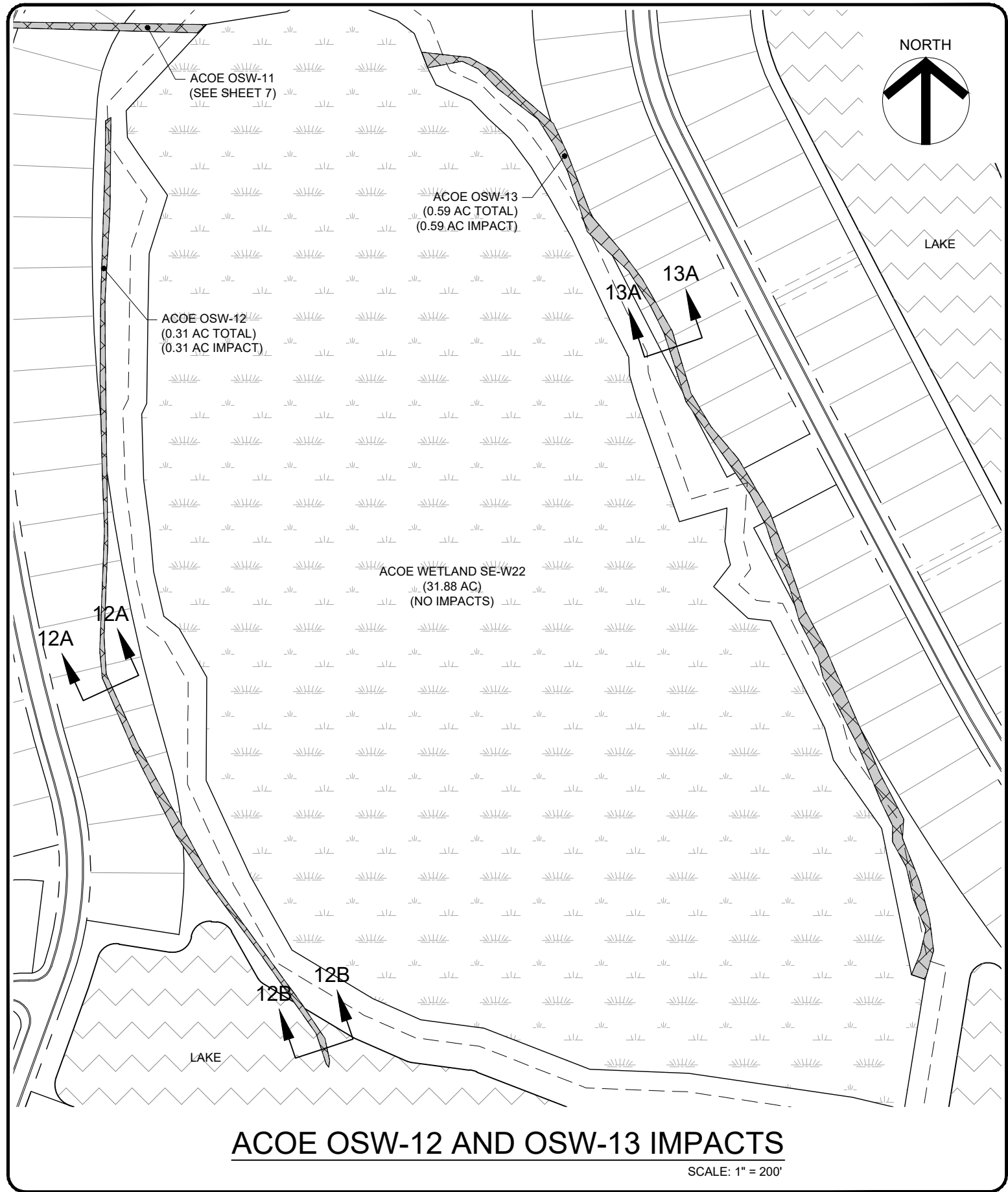
SECTION:	TOWNSHIP:	RANGE:
36	35S	19E
MANATEE COUNTY, FLORIDA		
FILE NAME:	615010107.dwg	SHEET:
		7

FLORIDA CERTIFICATE OF AUTHORIZATION #66421

JEREMY H. ARNOLD, P.E.
FL LICENSE NO. 66421

WALDROP ENGINEERING
CIVIL ENGINEERING | PLANNING | LANDSCAPE ARCHITECTURE
25100 BONITA GRANDE DRIVE - SUITE 305
BONITA SPRINGS, FL 34135
P: 239-405-7777 F: 239-405-7899
EMAIL: info@waldropengineering.com

B:\Projects\615-01 (Lakewood Ranch 339 Acres) Phase One\Drawings-Exhibits\615-01-01 ACOE Impact Exhibits\Current Plans\615010108.dwg



VERTICAL ELEVATIONS BASED ON: NAVD-88

LAKEWOOD RANCH 339 ACRES

PREPARED FOR:
TOLL BROTHERS
24201 WALDEN CENTER DRIVE, SUITE 204
BONITA SPRINGS, FLORIDA 34134
PHONE: (239) 596-6600

OSW-12 & OSW-13 IMPACTS

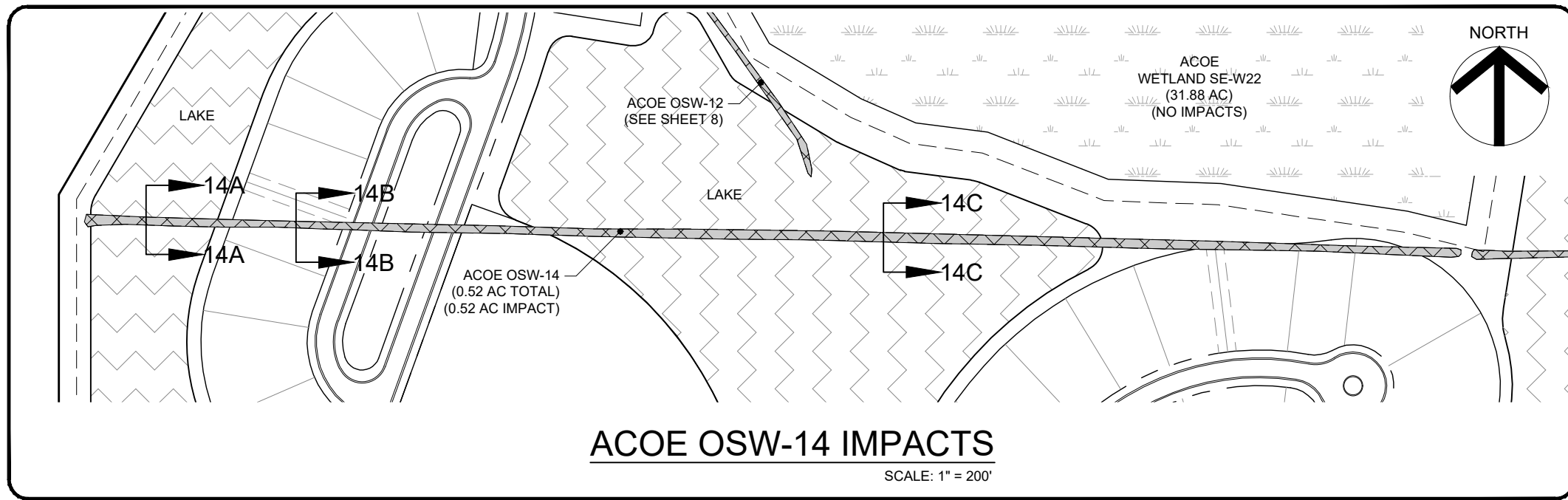
SECTION: TOWNSHIP: RANGE: 36 35S 19E
MANATEE COUNTY, FLORIDA
FILE NAME: 615010108.dwg
SHEET: 8

FLORIDA CERTIFICATE OF AUTHORIZATION #6636

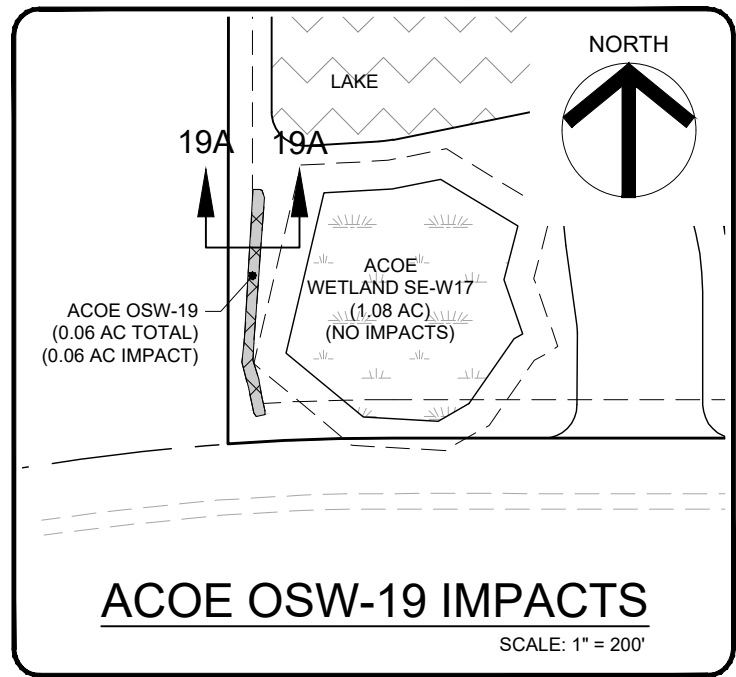
JEREMY H. ARNOLD, P.E.
FL LICENSE NO. 66421

WALDROP ENGINEERING
CIVIL ENGINEERING | PLANNING | LANDSCAPE ARCHITECTURE
25100 BONITA GRANDE DRIVE - SUITE 305
BONITA SPRINGS, FL 34135
P: 239-405-7777 F: 239-405-7899
EMAIL: info@waldropengineering.com

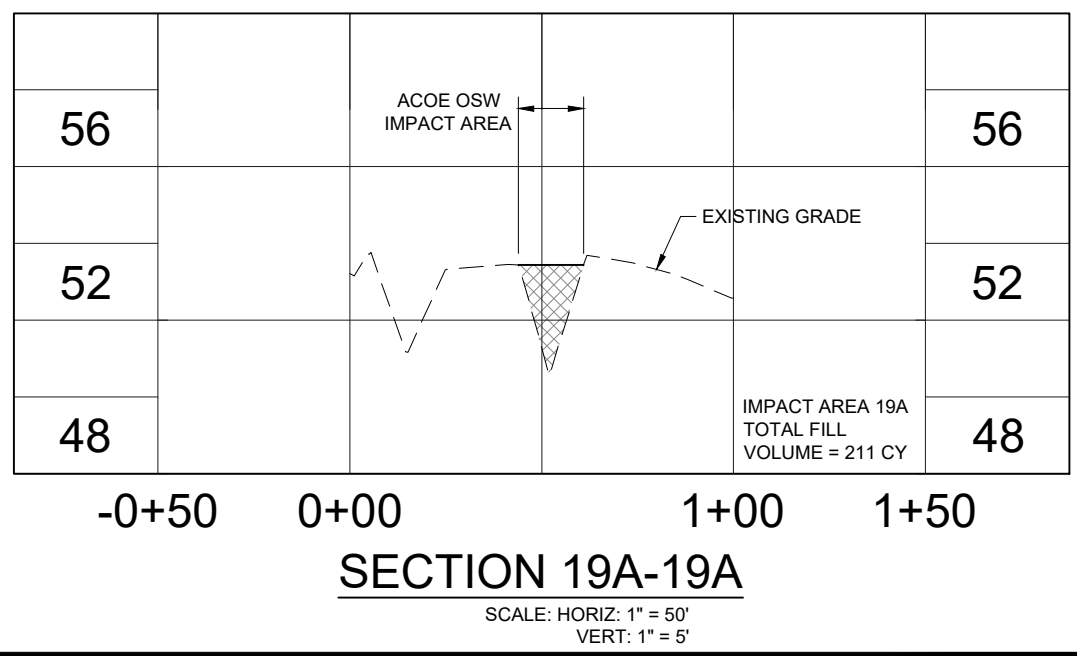
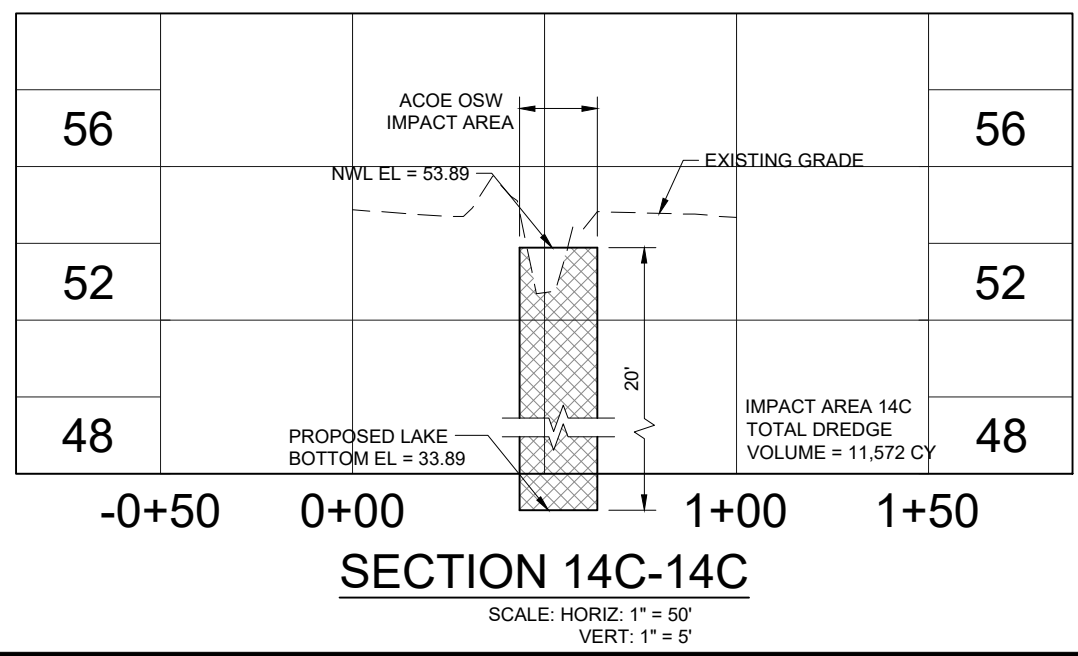
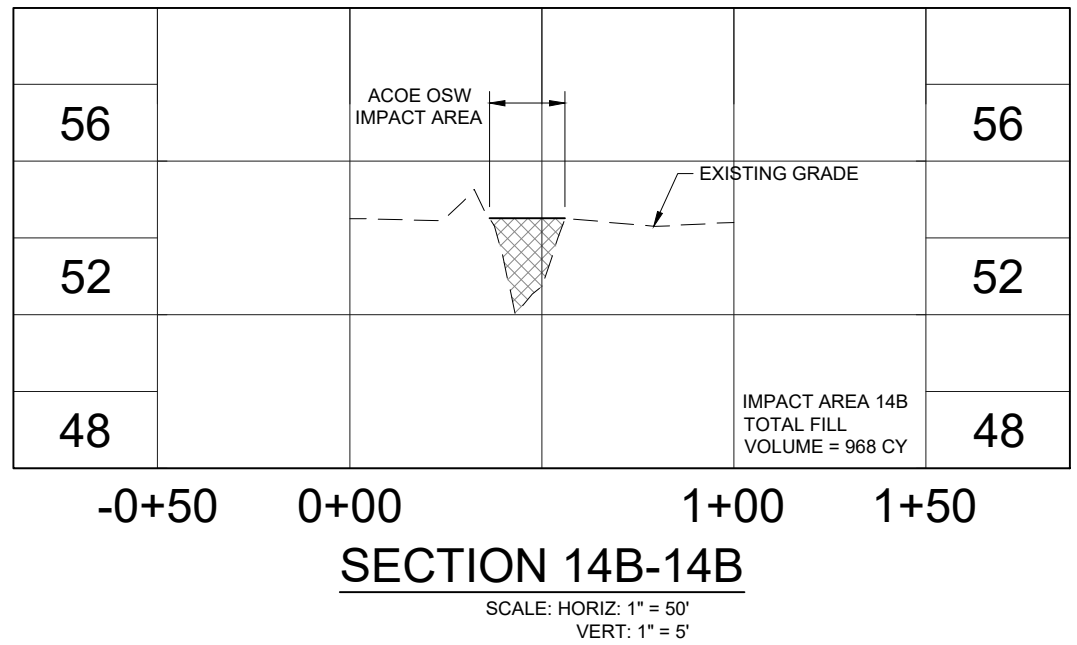
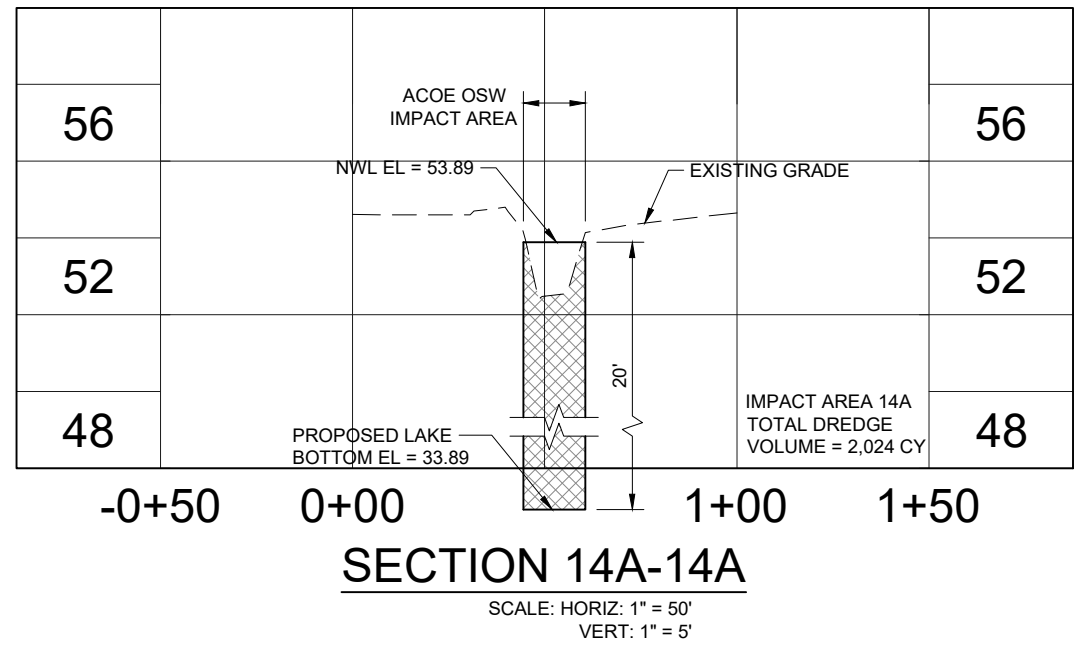
B:\Projects\615-01 (Lakewood Ranch 339 Acres) Phase One\Drawings-Exhibits\Current Plans\615010109.dwg



ACOE OSW-14 IMPACTS
SCALE: 1" = 200'



ACOE OSW-19 IMPACTS
SCALE: 1" = 200'



VERTICAL ELEVATIONS BASED ON: NAVD-88

LAKWOOD RANCH 339 ACRES

PREPARED FOR:

TOLL BROTHERS
24201 WALDEN CENTER DRIVE, SUITE 204
BONITA SPRINGS, FLORIDA 34134
PHONE: (239) 596-6600

OSW-14 & OSW-19 IMPACTS

PLAN REVISIONS

SECTION: TOWNSHIP: RANGE:
36 35S 19E
MANATEE COUNTY, FLORIDA
FILE NAME: 615010109.dwg
SHEET: 9

FLORIDA CERTIFICATE OF AUTHORIZATION #6636

JEREMY H. ARNOLD, P.E.
FL LICENSE NO. 66421

WALDROP ENGINEERING
PLANNING | LANDSCAPE ARCHITECTURE
CIVIL ENGINEERING

25100 BONITA GRANDE DRIVE - SUITE 305
BONITA SPRINGS, FL 34135
P: 239-405-7777 F: 239-405-7899
EMAIL: info@waldropengineering.com